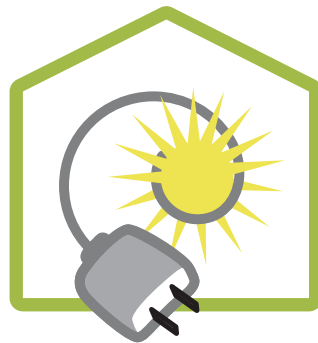
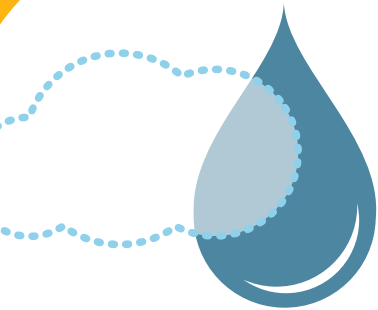
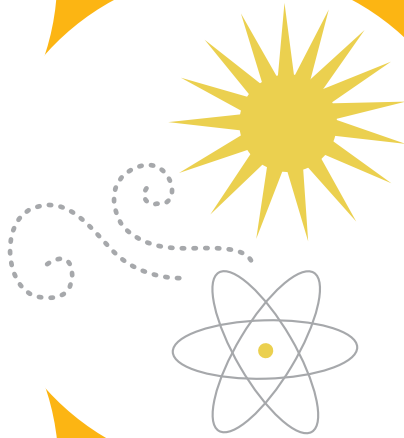




Jiangsu PROVINCE

14th Five-year Plan
Subnational Climate Policy Brief



Berkeley Law

California-China
Climate Institute

	14TH FIVE-YEAR PLAN TARGETS	POLICY FOCUS
 <p>CARBON PEAKING and NEUTRALITY</p>	<ul style="list-style-type: none"> • Initial formation of a green low-carbon circular economic system • Efficiency of energy use in key industries will reach the international advanced level • Increase in carbon dioxide emissions will be effectively controlled • Energy consumption per unit of gross domestic product (GDP), carbon dioxide emissions per unit of GDP, the proportion of non-fossil energy consumption will reach the national target • Forest coverage rate will continue to improve 	
 <p>ENVIRONMENTAL TARGETS</p>	<ul style="list-style-type: none"> • Particulate matter (PM) 2.5 concentration will reach 33 mg/m³ • The percentage of days with good air quality will reach about 82% • Proportion of national examination section water reaches class III will be 87% 	<ul style="list-style-type: none"> • Controlling air pollution from the steel industry, cement industry, waste incineration, and coking industry • Controlling VOCs in key industries and industrial parks
 <p>ENERGY SUPPLY</p>	<ul style="list-style-type: none"> • Proportion of non-fossil energy in total energy consumption of the province will reach 16% • Proportion of renewable energy in total energy consumption of the province will reach 13% • Renewable energy installations will reach more than 55 million kilowatts • Installed capacity of wind power and installed capacity of photovoltaic power generation will both reach 26 million kilowatts • Installed capacity of biomass power generation will reach 3 million kilowatts 	<ul style="list-style-type: none"> • Promoting wind power, solar energy power and biomass energy • “Double control” system on both the total energy consumption and intensity
 <p>TRANSPORTATION</p>	<ul style="list-style-type: none"> • Jiangsu will build a total of more than 800,000 charging piles, including about 200,000 public charging piles, and 500 exchange stations • More than 800 comprehensive energy supply service stations will be built • Proportion of new energy vehicles in newly purchased or updated vehicles in public institutions will be no less than 30% 	<ul style="list-style-type: none"> • Promoting new energy vehicles and improving infrastructure • Promoting green transportation
 <p>INDUSTRY</p>	<ul style="list-style-type: none"> • Carbon dioxide (CO₂) emissions per unit of industrial added value will drop by 20% • 1,000 green factories and more than 10 green parks will be built 	<ul style="list-style-type: none"> • Controlling and monitoring industries of high energy consumption and emissions • Promoting low-carbon transformations in industries through new technologies

	14TH FIVE-YEAR PLAN TARGETS	POLICY FOCUS
 <p>BUILDING</p>	<ul style="list-style-type: none"> • Energy consumption per unit of floor area, carbon emissions per unit of floor area, and comprehensive energy consumption per capita of public institutions will decrease by 6%, 7%, 7%, and 7% respectively compared to 2020 • The new ultra-low energy construction area will reach 5 million square meters • New high-quality green construction area will reach 20 million square meters • Percent of conventional energy substituted by renewable energy alternatives in urban buildings will reach 8% • Percent of green buildings in new civil buildings in urban areas to reach 100% 	<ul style="list-style-type: none"> • Promoting the use of renewable energy in buildings • Increasing energy efficiency of existing buildings through monitoring, auditing, and energy performance contracting
 <p>NATURAL and WORKING LANDS</p>	<ul style="list-style-type: none"> • Forest coverage rate will reach 24.1% • Proportion of national-level ecological conservation redline in the national land area will exceed 8.21% • Natural wetland protection rate will exceed 60% • Continental natural shoreline retention rate will exceed 35% 	<ul style="list-style-type: none"> • Implementation of stringent arable land protection system
 <p>SOURCES</p>	<ul style="list-style-type: none"> • Implementation advice on Jiangsu's 14th Five-Year Plan of Energy-Saving • Notice on Carbon Peaking and Neutrality Implementation • Jiangsu's 14th Five-Year Plan on Ecological Environmental Protection Planning • Jiangsu's 14th Five-Year Plan on Renewable Energy Development • Jiangsu's 14th Five-Year Plan on New Energy Vehicle Industry Development • Jiangsu's 14th Five-Year Plan on Natural Resources Protection and Utilization • Jiangsu's Notice on 14th Five-Year Plan of Meteorological Development Plan 	